



DTEK 2.1 PRODUCT FEATURES

Introduction:

DTEK is the newest and most advanced quantitative optical inspection service for monolithic integrated circuit packaging. The service provides users with unambiguous, quantitative information about the component surface. It is primarily intended for use as a counterfeit mitigation tool in a holistic quality system and is recommended to aid in the incoming receiving and inspection process.

Service Highlights:

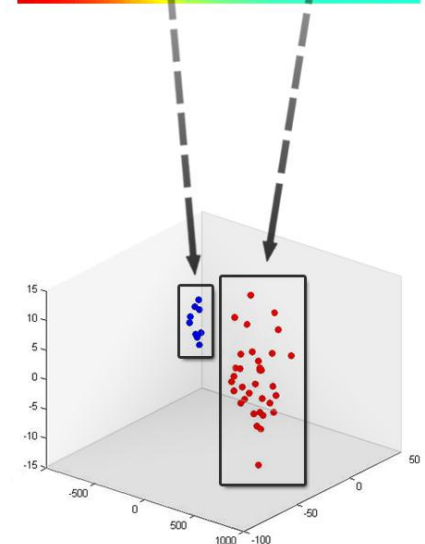
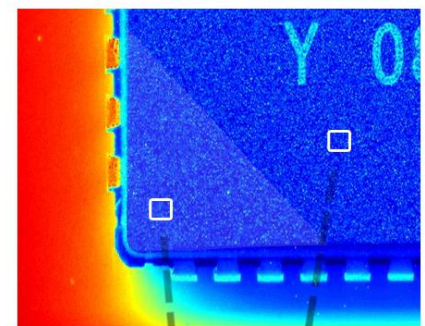
Covisus is offering the DTEK 2.1 on an annual subscription basis, including:

- Access to real-time information about component conformance
- Continuous performance and device characterization updates as counterfeit methods evolve
- Hardware replacement if existing system is in need of repair

Compelling Economics:

- Rapid, Non-Destructive, Safe, and Efficient
- Identifies multiple common counterfeit methods for electronic components
- Provides counterfeit screening information with or without a “Golden Sample” reference
- Reduces authentication cycle time and lowers inspection cost
- Does not use any chemicals or harmful solvents

Quantitative Optical Inspection of Electronic Components:



SYSTEM SPECIFICATIONS:

PHYSICAL & MECHANICAL SPECIFICATIONS	
DTEK 2.0 System Weight:	14 kg
Physical Dimensions:	508mm (L) x 330.2mm (W) x 288.9mm (H)
Power:	100-240V ~ 2.0amps 50-60Hz

COMPONENT TESTING GUIDELINES	
Component Category:	Monolithic Integrated circuits
Maximum Component Size:	40mm(L) x 40mm(W) x 12mm(H)
Minimum IC Package Size:	4.8mm(L) x 3.8mm(W) x 1mm(H)
Minimum Recommended Sample Size:	5 (used before solvent or destructive testing)
Lead Types:	Gull Wing, J/I Leads, C-Bend, Bat-Wing, Exposed/Land Pad
Package Material:	Plastic and Ceramic

INTEGRATED COMPUTING SPECIFICATIONS	
Data Processing Unit:	Integrated mini computing module
Connectivity:	Ethernet connectivity
Reporting:	Customizable HTML reporting options
Data Backup:	Multiple report backup options
User Interface PC:	System requires user interface PC. Can utilize existing PC workstation or optional Covisus provided workstation. Requires internet connectivity and Google Chrome™ browser

SETUP & USE	
Calibration:	Weekly calibration step conducted by DTEK users and annual calibration conducted by Covisus
Illumination:	White light visible spectrum LED Illumination
Mechanical:	System is intended to be stationary once installed. System users must comply with training requirements for operating and handling
Training:	2-hour user training session